



December Club Trip

This month's trip is TBD. Please attend the meeting to fine out about the trip and the meet up location.

www.mountaineers4x4.org

Check Out Trails on:
trailsofforad.com



November Trip Report

Kelly Flats from the back of the pack.

I invited my friends Nate and Jason to join me on a run through Kelly Flats with the Mountaineers. We decided to hang back and bring up the rear. I never counted the number of

trail runners, but it was a good size group, pretty common for a



Club Sponsors

Sessions Motorsports

1308 Riverside Ave Suite A

Fort Collins, CO 80524

970-493-6766

sessionsmotorsports.com

Addicted Offroad

328 S Link La #16

Fort Collins, CO 80524

307-363-2488

WWW.addictedoffroad.com

4 Wheel Parts

3686 Draft Horse Dr.

Loveland, CO 80538

970-203-0031

4wheelparts.com

popular trail like Kelly Flats. It took some time to get everyone moving up the trail.

Once we arrived at the turn for Heart Attack Hill about half a dozen Mountaineers and 2 guests headed towards the ominously named obstacle. The lower 2/3 of the hill offers a few different lines depending on how adventurous the driver is feeling. Everyone proceeded along without trouble, especially after trail leader Nick jumped out and gave some spotting help. As the lead elements of the group reached the end of Heart Attack Hill, progress started to slow and eventually came to a halt.

The 3 of us at the back of the pack played on the obstacles going up and down the hill a couple of times. We didn't hear any word on what was occurring at the front of the pack, so we decided to head back down Heart Attack Hill and proceed on the bypass trail. We were getting anxious to reach the chutes. We caught up to the rest of the Mountaineers waiting at the junction where the Heart Attack Hill trail meets up with the bypass. No one there had heard from the group stuck at the top of Heart Attack Hill. After waiting for a few minutes, Nate and Jason decided to drive down to find out what was happening (they don't like to sit around doing nothing). They found the group formulating plans to rescue Mountaineer Eric in his Toyota Sequoia. Unfortunately, Eric's rig had suffered a broken rear third member as well as a broken front axle shaft. The decision was made to use Jason's big block powered Chevy truggy to pull the Sequoia to the top of Heart Attack Hill.

https://www.youtube.com/watch?v=HGb8QoXL_gc

Club Sponsors

Bullhide Liner 4x4 & Auto Accessories

5817 South College Ave.
Ft. Collins CO
970-224-2288

Horsepower Auto Brokers, LLC

417 N. US HWY 287
Ft. Collins CO
970-482-2579

www.horsepowerauto.com

4X4 Off Road

1713 Willox Ct,
Ft. Collins
970-224-1133

www.4x4offroadnetwork.com

NAPA Auto Parts

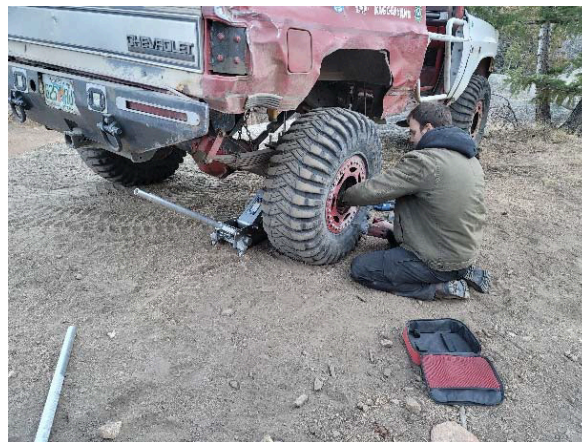
316 S. Link Ln.
Ft. Collins
(970) 407-0020

Even 454 cubic inches wasn't enough to pull the Sequoia up the last 50 feet of the hill. Trip Planner Nick hooked his yellow YJ to the front of Jason's rig and helped get everyone up to the top. After getting Eric to the junction with the bypass, we headed on to the Chutes. Eric stayed with his truck to wait for us to return for him. When we arrived at the chutes the other Mountaineers were finishing up some runs through the obstacle. Nate, Jason, and I took our turns through the Chutes with some minor scrapes.

<https://www.youtube.com/watch?v=RhTTuuGV7YI>

<https://www.youtube.com/watch?v=L7ruMyYVMVI>

<https://www.youtube.com/watch?v=g9WaEPJHHo>



On his way out the exit of the Chutes, Nate managed to pull a tire out of the beadlock. We had to unbolt the

beadlock ring to get the tire bead back under it. The sun sets early this time of year in the mountains so we quickly headed back to get Eric while the rest of the Mountaineers finished Kelly Flats. We were able to get Eric down to the trailhead without issue. Luckily his engine was fully operational, so he had good steering and brakes.

We loaded Eric's Sequoia onto Nate's trailer. In order to get all of the vehicles back to civilization, we had to

Club Sponsors

Always A Deal Inc.

Computer Services

Johnstown

970-310-7547

www.AlwaysaDeal.info

Maresh Cabling, LLC

7450 McClland RD,

Wellington, CO 80549

970-556-7276

donmcabbling@gmail.com

Wellington Toy Storage

4000 Washington Ave.

Wellington

970-498-2111

www.wellingtontoystorage.com

The Natural Path

2212 S. College Ave.

Ft. Collins CO

970-829-1110

thenaturalpathLtd.com

play musical chairs, or drivers' seats in this case. Nate drove his Blazer which can be quite the challenge on pavement. I drove Nate's tow rig hauling the Sequoia and Eric was left piloting my crew cab. We all made it to Eric's home in Greeley without a hitch and unloaded the Toyota safe and kind of sound. It was a long day but it was a fun adventure that made for a memorable day on the trail with the Mountaineers.

By Scott Riley,
Treasurer



December 2021

SUN 28	MON 29	TUE 30	WED Dec 1	THU 2	FRI 3	SAT 4
Darold Klein	Adaline Zamora Tom Washburn					
5	6	7	8	9	10	11
Kelly Ficarra	Ann Lietz				Jason Marooney	Scott Ficarra
12	13	14	15	16	17	18
Cristal Opdyke Mike Braskich Sheiby Peterson		Matthew DeWitt Suzanne Knapp	Shane Peterson Steve Claus	Jaden Dyrenforth Shar Manno	Teresa Shively	Adrian LeDeaux Bill Dyrenforth
19	20	21	22	23	24	25
Brandon Loeb	Heather Copper Klaege		Dave Martin John Jansen	Rob Paul Devan Knapp		
26	27	28	29	30	31	Jan 1
	Kyle Eddy	Alice Mueller	Carl Malone	Janine Bernard	Michael Nothnagel Thomas Carter	



Our next membership meeting will also be a Christmas party. We are encouraging everyone to bring a snack or dessert to share and we will have an extended break to enjoy the food. There will be an ugly sweater contest with the winner getting a \$30 gift card to Bullhide 4x4. In addition to our normal door prizes, we will have a large door prize, amount to be determined, spectate from the normal drawing that everyone will get a single entry to win.

